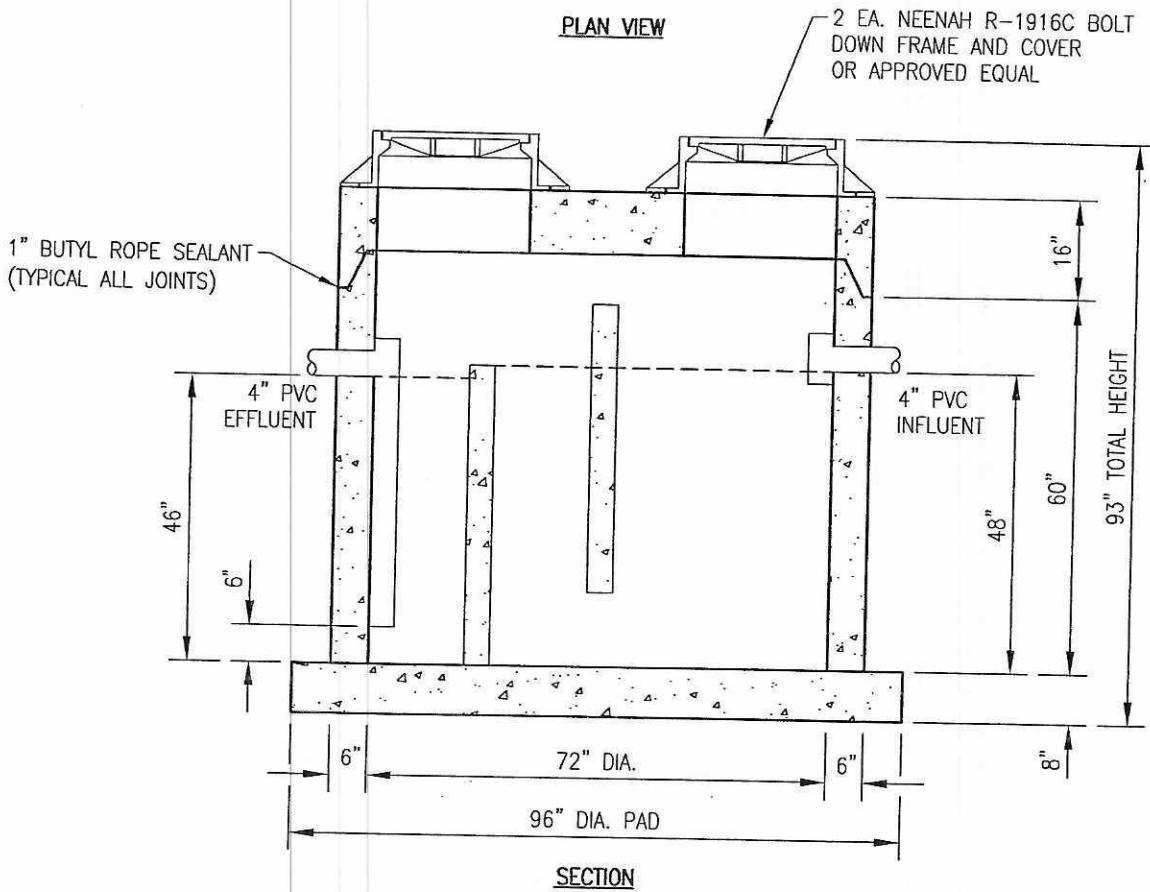


PLAN VIEW



GREASETRAP SHALL BE CAPABLE OF WITHSTANDING H-20 LOADING, IF
LOCATED IN A PAVEMENT AREA.

**750 GALLON REINFORCED CONCRETE
GREASE INTERCEPTOR**



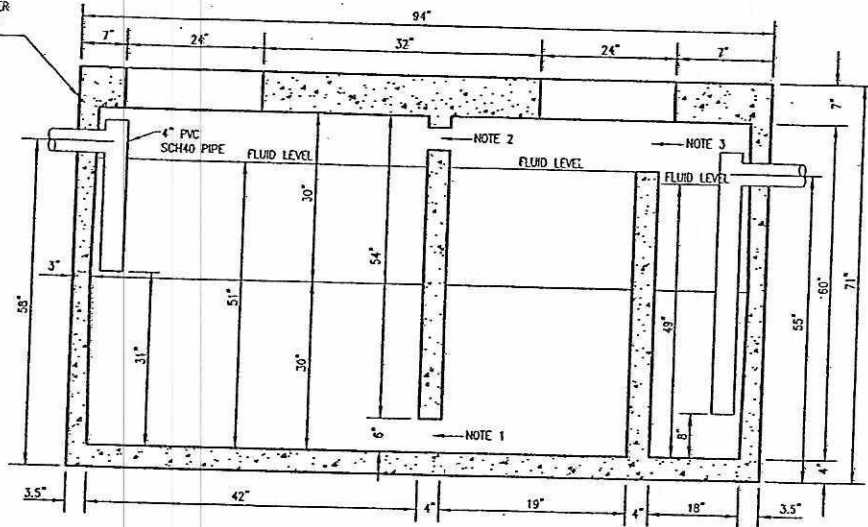
DATE: 7/26/06
DRAWN BY: DAB

750 GALLON REINFORCED
CONCRETE GREASE INTERCEPTOR

GREASE TRAP
(750 GALLON)

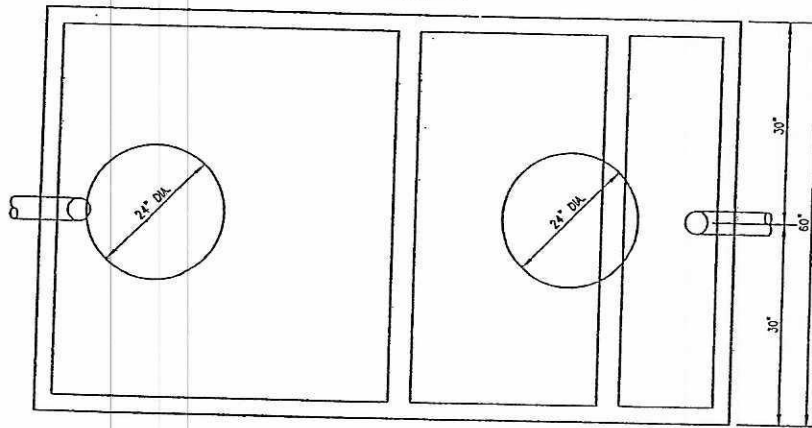
APPENDIX "B"

ADD RISER SECTIONS TO GREASE INTERCEPTOR PER VILLAGE OF SWANSEA SEWER REQUIREMENTS TO ACHIEVE FINISH GRADE ELEVATION



NOTE 1: 67 1/4" x 32" W OPENING AT BOTTOM CENTERED
 NOTE 2: 2-4" DIAMETER HOLES - 2" DOWN - 4" OFF CENTER - 8" BETWEEN HOLES
 NOTE 3: 9" H x 24" W OPENING AT TOP CENTERED

SIDE SECTION



TOP VIEW

WEIGHT: 14,670 LBS

NOTE:
 THIS TANK IS NOT DESIGNED FOR VEHICULAR TRAFFIC. IF USED IN TRAFFIC AREAS A REINFORCED CONCRETE SLAB MUST SPAN THE TANK AND OVERDIG TO PROTECT THE TANK.

OPTIONS:
 GRADE RISERS (DONUTS)
 FRAME & COVERS
 LARGER INLET & OUTLET
 BIO-GEM ENZYME ADDITIVE
 SEALANT

1000 GALLON REINFORCED CONCRETE GREASE INTERCEPTOR

EXCAVATION SIZE: 9'L x 6'W

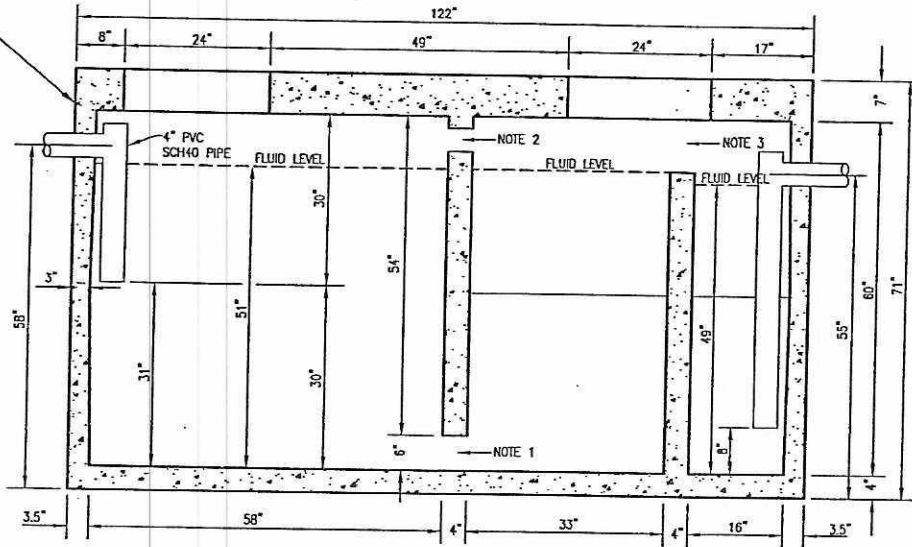


DATE: 1/21/05
 DRAWN BY: DLS

1000 GALLON REINFORCED CONCRETE GREASE INTERCEPTOR

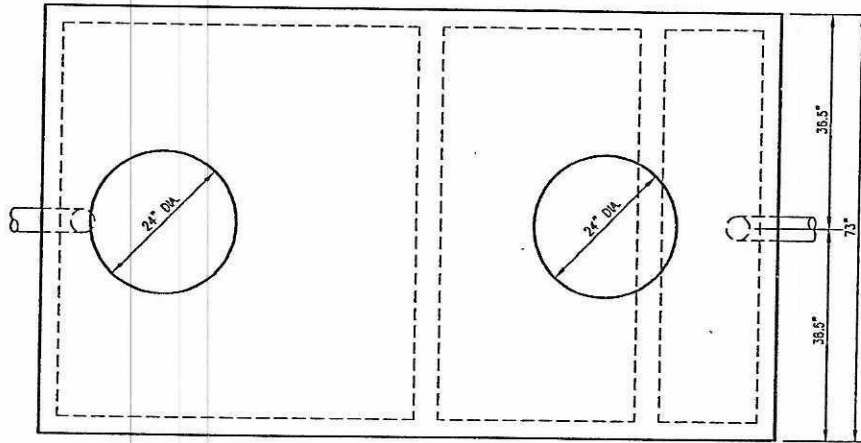
GREASE TRAP (1000 GALLON)

ADD RISER SECTIONS TO GREASE INTERCEPTOR PER VILLAGE OF SWANSEA SEWER REQUIREMENTS TO ACHIEVE FINISH GRADE ELEVATION



NOTE 1: 6"H x 32"W OPENING AT BOTTOM CENTERED
 NOTE 2: 2-4" DIAMETER HOLES - 2" DOWN - 4" OFF CENTER - 8" BETWEEN HOLES
 NOTE 3: 9"H x 24"W OPENING AT TOP CENTERED

SIDE SECTION



TOP VIEW

WEIGHT: 14,670 LBS

NOTE:

THIS TANK IS NOT DESIGNED FOR VEHICULAR TRAFFIC. IF USED IN TRAFFIC AREAS A REINFORCED CONCRETE SLAB MUST SPAN THE TANK AND OVERDIG TO PROTECT THE TANK.

OPTIONS:

- GRADE RISERS (DONUTS)
- FRAME & COVERS
- LARGER INLET & OUTLET
- BIO-GEM ENZYME ADDITIVE SEALANT

1500 GALLON REINFORCED CONCRETE GREASE INTERCEPTOR

EXCAVATION SIZE: 11'L x 7'W



DATE: 1/21/05

1500 GALLON REINFORCED CONCRETE GREASE INTERCEPTOR

GREASE TRAP (1500 GALLON)