

PATH:s:\shared\clients\02159 - carlinville\01 - 2016 water main replacement\cad\dwg\general\02159 - 801 location & sample plan.dwg  
 PLOTTED: 6/12/2017 @ 8:10:14 AM BY: rds1



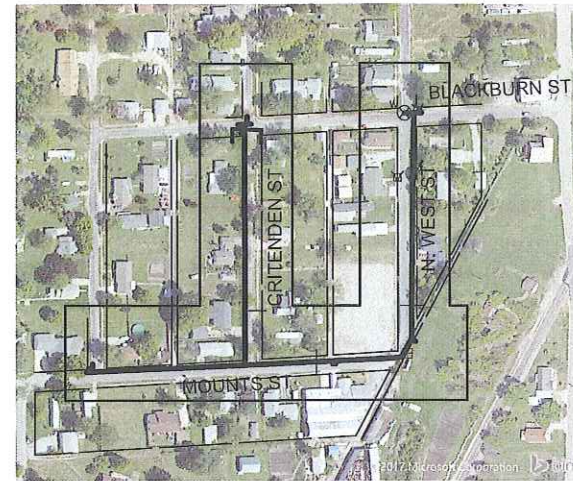
**LOCUST STREET**

SCALE: NTS



**KILLIAM, HARRINGTON & DENBY STREET**

SCALE: NTS



**MOUNTS, CRITTENDEN & N WEST STREET**

SCALE: NTS



**MAYO STREET**

SCALE: NTS



**SUE STREET**

SCALE: NTS

**PROJECT AREAS**



DESIGN FIRM NUMBER 184-002692,  
 EXPIRES APRIL 30, 2017

1004 STATE HWY. 16  
 JERSEYVILLE, IL 62052  
 P: (618) 498-6418  
 F: (618) 498-6410

838 EAST McCORD STREET  
 CENTRALIA, IL 62801  
 P: (618) 533-6525  
 F: (618) 533-6652

310A VISION DRIVE  
 COLUMBIA, IL 62236  
 P: (618) 281-8133  
 F: (618) 281-8290

5213 MAE DRIVE, SUITE D  
 GODFREY, IL 62035  
 P: (618) 468-8076  
 F: (618) 468-8078

NO.	DATE	REVISIONS

**PRELIMINARY**

**SHEET LAYOUT & SAMPLE PLAN**  
**2016 WATER MAIN REPLACEMENT**

CITY OF CARLINVILLE  
 MACOUPIN COUNTY, ILLINOIS

DRAWN BY: RDS  
 CHECKED BY: EYF  
 APPROVED BY: RMP

HORIZONTAL SCALE:  
**AS NOTED**

VERTICAL SCALE:  
**N/A**

PROJECT NO.  
**02159-801**

DATE:  
**6/12/17**

SHEET NO.  
**4**